

CB580 Shipping Container Bar

Specification

Model:	CB580
Dimensions:	580*220*220cm
Color:	RAL4003
Window:	Sliding concession windows, with flip-out shelves
Electrical:	220V/60Hz
Material:	Frame: Galvanized steel Exterior wall: Corrugated steel Insulation: 40mm black cotton Interior wall: ACM Rooftop deck: wooden flooring Workbench: 201 stainless steel Floor: Non-slip aluminium checkered floor
Accessory:	Stainless steel Propane tank cage Air conditioner Canopy Logo
Electrical System:	Electrical panel board Circuit breaker Power sockets Generator receptacles Interior light bars LED flood lights
Water Sink Kits:	2 compartment water sink Commercial faucet for cold & hot water Floor drain
Water Supply System:	24V water pump 25L*6 food-grade plastic clean water tanks & cley water tanks
Kitchen Equipment:	Ice maker 1.5m under-counter fridge Vertical fridge freezer Drink cooler Electric grill Gas stove Gas grill Gas griddle Deep fryer Brain Marie
Warranty:	One-year warranty for free

Details



- Side -



- Front -



- Side -



- Rear -



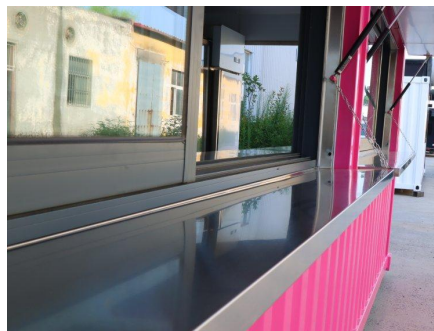
- Rear -



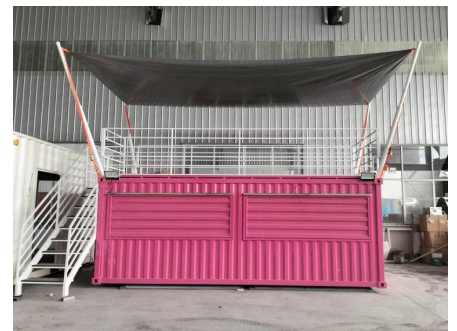
- Stairs -



- Propane Tank Cage -



- Concession Window -



- Canopy -



- Interior -



- Sink -



- Water Storage -

Features

➔ - Double-decker Structure: -

This shipping container bar is comprised of a 19ft ground-level shipping container and an open-air upper deck above, creating a double-decker experience. The rooftop which is laid wooden floor and installed railings for safety offers outdoor seating. Create a unique dining experience for customers by putting out tables and chairs on it and setting up a canopy.

➔ - Insulation -

The walls and ceiling are insulated with a layer of 4cm-thick cotton, and the kitchen is equipped with an air conditioner. As a result, the container remains cool and comfortable, even when exposed outdoors during scorching summer days.

➔ - Commercial-grade Kitchen Equipment Package -

This package includes an under-counter fridge, a vertical fridge freezer, a drink cooler, an ice maker, a grill, a griddle, a stove, a fryer, and Bain Marie. All are designed for commercial use. The cooking equipment heavily operates on natural gas or propane, so we welded a stainless steel cage to safely house a 50kg propane gas tank (measuring 40cm in diameter and 120cm in height).

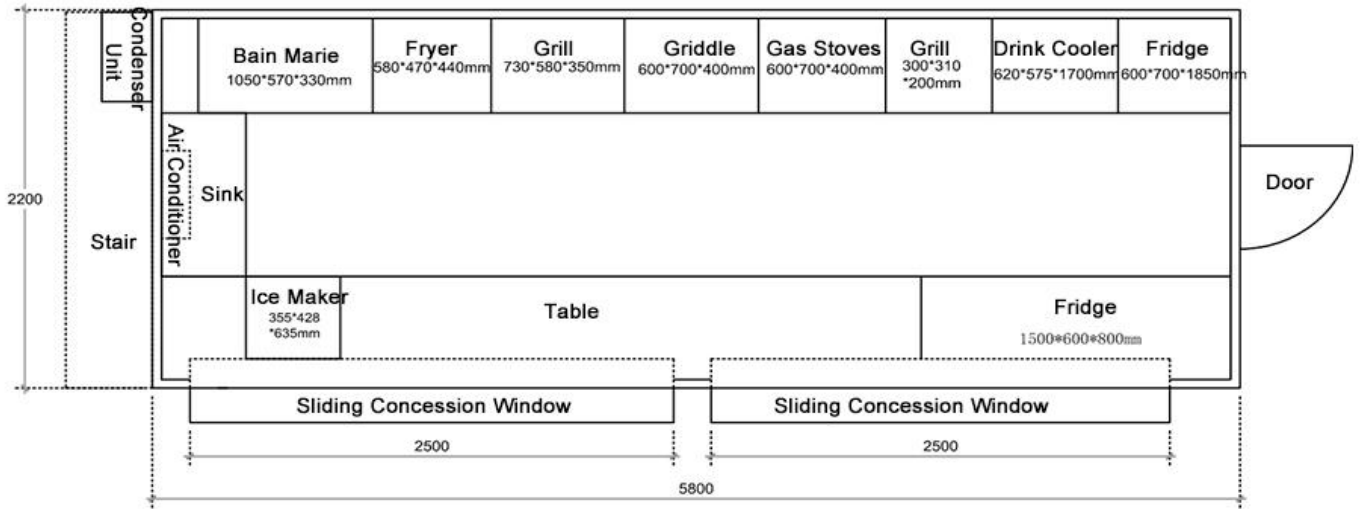
➔ - Fast Set up & Transportation -

The shipping container bar works as a whole structure, and the kitchen equipment is fixed within the container using specialized techniques. There's no need for disassembly during transport. A semi-truck can easily handle transportation. But what about installation? All aspects can be completed within a single day.

➔ This custom-built shipping container bar is available for \$17,800, including extra equipment & customization (mentioned in the specification below). Buy it now, or customize it from the start according to your wild visions! The base price for this model starts at \$12,000.

Floor Plan

5.8m Container Cafe, Dimensions: 580*220*220cm, Electrical: 220V/60HZ, Color: RAL4003



Designs

